



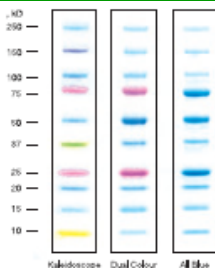
BIO-RAD

SPRING PRICE DROP

Precision Plus Protein™ Standards*

From €399

Buy a five pack of Precision Plus Protein™ standards for the price of just three individual standards.



SsoFast™ EvaGreen® Supermix with Hard-Shell® Plates

€680

Robust qPCR results in less time and with increased sensitivity



TC10™ Automated Cell Counter

€3,425

The TC10™ automated cell counter now comes with everything you need to count your cells and prepare your qPCR samples.



Molecular Imager® Gel Doc™ EZ with White Light and UV Imaging Trays

€5,995

Versatile, modular, gel documentation system with Image Lab™ software for completely automated image acquisition and analysis.



New Online Shop—Register Today

Logon to our website for product Brochures and publications.

Register with the new online shop to place your order today.

Pricing and Ordering Information		
161-0393SP	5 tubes of Precision Plus Protein All Blue Standards, 2.5ml, 250 applications	€399
161-0394SP	5 tubes of Precision Plus Protein Dual Colour Standards, 2.5ml, 250 applications	€450
161-0395SP	5 tubes of Precision Plus Protein Kaleidoscope Standards, 2.5ml, 250 applications	€475
172-5201SP	1000 reactions (20µl) of SsoFast EvaGreen supermix with 50 x 96-well Hard-Shell plates with clear thin-wall polypropylene wells and a rigid white-shell thermostable skirt	€680
145-0001SP	TC10 automated cell counter, includes slides and Trypan blue for 120 samples, iScript sample prep and reverse transcription reagents for 100 reactions	€3,425
170-8270SP	Molecular Imager Gel Doc EZ base unit (170-8270) with white light (170-8272) and UV (170-8271 imaging trays) *Blue light and Stain-free imaging trays also available. Please contact Alpha Technologies if you would prefer to exchange the whight light and UV trays with these options	€5,995

VALID UNTIL 30th APRIL 2011

***NOTICE TO PURCHASER: LIMITED LICENSE** This product is sold under license from Life Technologies Corporation, Carlsbad, CA for use only by the buyer of the product. The buyer is not authorised to sell or resell this product or its components.

The Leinster Technology Centre, Blessington Industrial Estate, Blessington, Co. Wicklow, Ireland
 Tel: +353(0)45865440, Fax: +353(0)45865441, Tel (Dublin): +353(0)14962422, Tel (Cork): +353(0)214343551
 email: sales@alphatech.ie

GELDOC XR+ & CHEMIDOC XRS+ IMAGING SYSTEMS

The **GeIDoc XR+** and **ChemiDoc XRS+** systems are based on CCD high-resolution, high-sensitivity detection technology and modular options to accommodate a wide range of samples, from large handcast polyacrylamide gels to small ReadyAgarose gels and various blots.

These systems support multiple detection methods including fluorescence, colorimetry, densitometry, chemiluminescence, and chemifluorescence.

REAL TIME PCR DETECTION SYSTEMS

CFX384 - CFX96 - MyIQ™ - MiniOpticon

Each of Bio-Rad's real-time PCR detection systems is an upgrade that adds real-time PCR capabilities to a base thermal cycler. The detection systems incorporate optical modules that enable detection of target sequences labeled with fluorescent probes.

**PROTEON XPR36 PROTEIN INTERACTION ARRAY SYSTEM**

XPR technology, a unique approach to SPR multiplexing, greatly improves the efficiency and flexibility of your experimental design, enabling you to run more experiments in a shorter period of time. Guided by ProteOn Manager Software — an easy-to-use and intuitive package which uses a flexible guided approach to instrument control, experimental setup and data analysis.

BIO-PLEX SUSPENSION ARRAY SYSTEM

The Bio-Plex 3D is the next-generation multiplexing platform based on xMAP technology. Expanded multiplexing capability, faster time to results, and automation capability make it the platform of choice for high-throughput testing for nucleic acid and protein applications.

**PULSED FIELD GEL ELECTROPHORESIS**

Mapper XA - Chef DRIII - Chef DRII

PFGE has enabled progress in cancer research, food safety, public health, quality control and genome mapping. Bio-Rad offers three CHEF systems that incorporate different technologies for optimal resolution in various size ranges: CHEF, PACE, DR, FIGE and AFIGE, along with a variety of reagents and kits.

The Leinster Technology Centre, Blessington Industrial Estate, Blessington, Co. Wicklow, Ireland
Tel: +353(0)45865440, Fax: +353(0)45865441, Tel (Dublin): +353(0)14962422, Tel (Cork): +353(0)214343551
email: sales@alphatech.ie

The Technology Centre, 2/3 Curran Point, Larne, Co. Antrim, BT40 1AU, N. Ireland
Phone: +44 (0) 28 28260558, Fax: +44 (0) 28 28260548, email: sales@alphatechs.com